

A Publication of the North Coast Timber  
Taskforce

# FROM TREES TO TIMBER

THE NORTH COAST TIMBER STORY



Streeton design by Francis Furniture

# TABLE OF CONTENTS

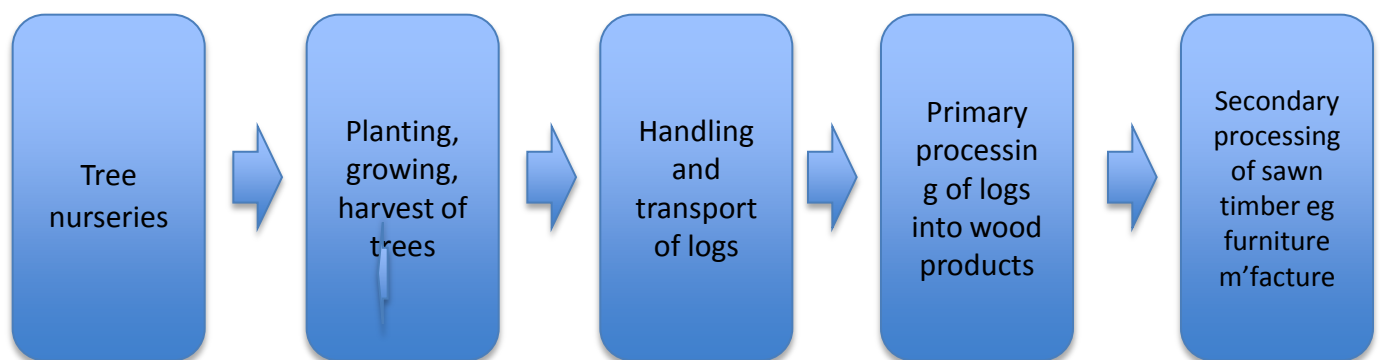
1. CONVERTING WOOD TO USEABLE  
TIMBER
2. PLANNING & MANAGEMENT
3. READY, STEADY AND GO
4. PRIMARY PROCESSING
5. SECONDARY PROCESSING
6. TERTIARY PROCESSING
7. CONTACT US

# 1. CONVERTING WOOD TO USEABLE TIMBER

The harvesting of timber to make the many products we use and enjoy is just one of the benefits of North Coast forests.

As a community, we need sustainable materials to build our homes and things like bridges, railways and wharves. But at the same time, we want to conserve our unique plants and animals, learn from the aboriginal sites, have clean water to drink and enjoy camping, bushwalking and other recreational activities in North Coast forests.

Sustainable forest management is the key to managing our forests for the long-term – maintaining biodiversity and ecological processes, the formation of soils, energy flows and carbon, nutrient and water cycles.



Follow the steps in converting wood to useable timber in more detail,,,,,,,,,

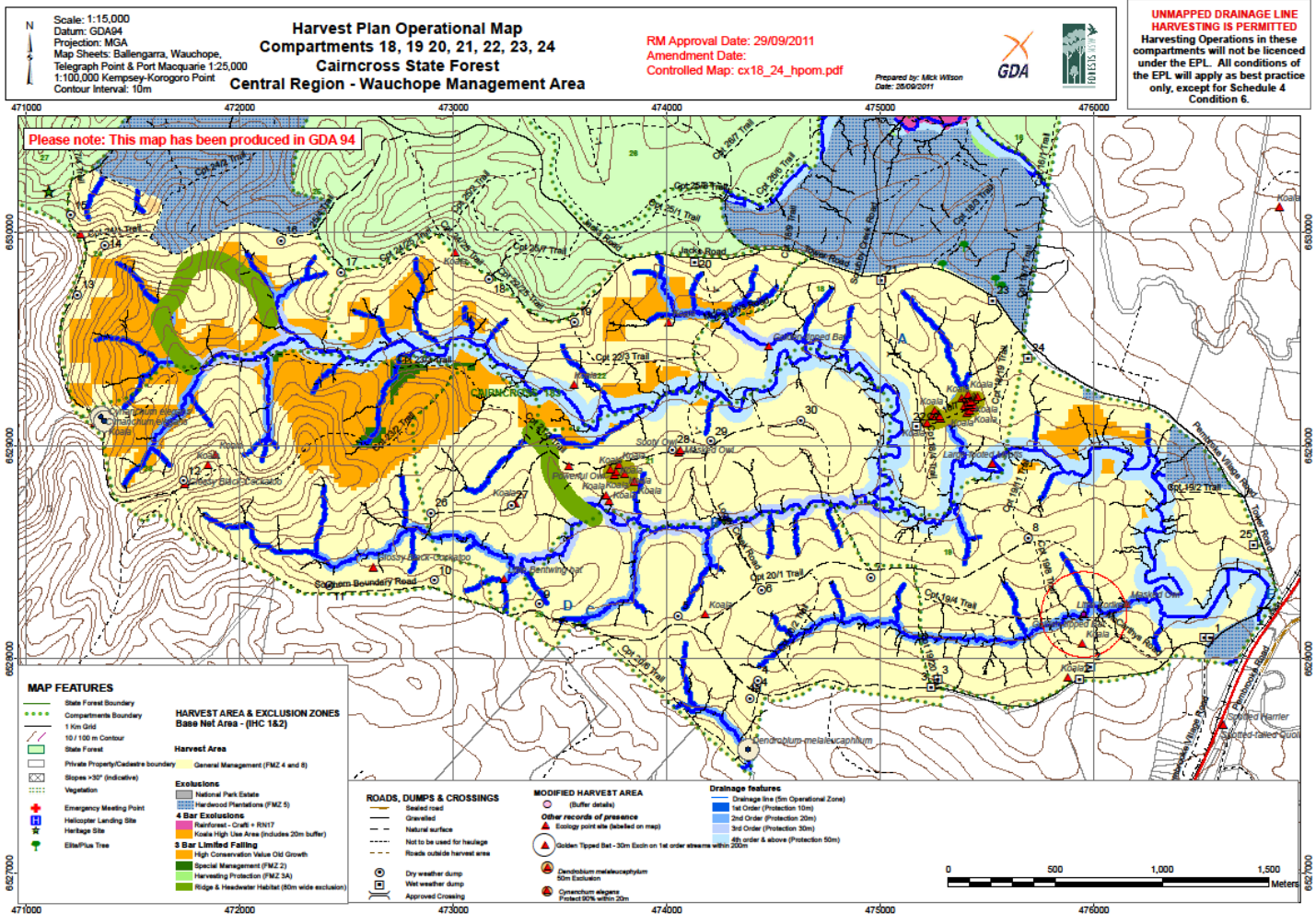
## 2. Planning

Forest harvest plans are prepared to provide clear instructions about how to carry out harvesting and associated roading activities to produce timber products and minimise the impact on important environmental and heritage values of North Coast forests.

These plans comprise maps, site specific information and instructions on issues like safety, silviculture, forest management zoning, flora, fauna and fish protection, cultural heritage protection, soil and water protection, road and crossing works.

The Forestry Corporation of NSW is responsible for the planning and management of all harvesting plans across NSW. Following is a Harvest Management Plan for Compartments 18-24 of the Cairncross State Forest

# A Typical North Coast Harvest Plan Operational Map





# 3. Ready, steady, go....

One tree can yield many different products. The biggest and best part of the trunk are termed 'quota' sawlogs and can be sawn for construction timber.

Other parts of the trunk are often used for flooring, cladding, framing, furniture, poles, decking, pergolas, mining timbers, bridges, wharves, pallets and even artworks.

The quality of the timber is dictated by its suitability to a particular use based on its grain, its appearance, its weight and any knots or other weaknesses.

Sawmills need high volumes of straight trees in order to produce a uniform product whereas furniture makers often want smaller volumes of timber that have a highly decorative and unique grain which will produce distinctive products.



# 4. Primary processing

This is the first stage of converting harvested timber into useable materials and results in a range of sawn timber, log and shaving materials that then proceed to be used in the making a diverse range of timber products.



Flooring by Hurfords



Tallowwood ready for despatch





# 4. Secondary processing

Sawn or cut timber is machined or made into more refined products by computer operated machines or by crafts people who cut, plane shape and sand the wood by hand. The resulting products are often fitted together by other tradespeople to make desks, chairs, beds, cabinets and many other items.



Chair by BagoWoodworks



Retaining wall by Koppers



giidany  
miilarl by  
Coffs  
Hardwoods



# 5. Tertiary Processing

Forming engineered products is called tertiary processing and can add even more value. This processing activity helps the North Coast economy by providing jobs in the supply and manufacturing chain.

The North Coast has several tertiary processing facilities, for example in engineered timber product development and wood fuel pellets. Examples that are being used everyday include both Panache and Cornerstone (Australian Solar Timbers) and architectural panels (Weathertex).



Weathertex external cladding



Cornerstone flooring by Australian Solar Timbers



Images used throughout this booklet have been supplied Australian Solar Timbers, Weathertex, Coffs Harbour Hardwoods, Koppers, Francis Furniture, Bago Woodworks, Hurford Hardwoods and Forestry Corporation, of NSW



“WE CANNOT BE SERIOUS ABOUT SUSTAINABLE DEVELOPMENT AND A DECENT LIFE FOR ALL IF WE IGNORE THE ROLE OF FORESTS AND TIMBER PRODUCTS IN CONTRIBUTING TO MAKING THESE POSSIBLE”.

- The Forest Book, Australian Forest Products Assoc.

Interested in the work of the North Coast Timber Taskforce  
Contact the Coordinator , 0431 737 024 or email,  
tsarge51@gmail.com

Visit our website at [www.forestmatters.com.au](http://www.forestmatters.com.au) where you will also find our sister publications:

- Those Behind the Trees (stories about people working in the North Coast timber sector)
- North Coast Hardwood User Directory (links and information to assist those interested in using North Coast timbers ) and,
- North Coast Timbers Supplier Search



Kiln dried hardwood at UWS Climate Change & Energy Research Centre – by Boral Timber